



# Timber Creek Local Emergency Plan



**Northern Territory  
Emergency Service**

# Contents

<b>1. Document control</b> .....	<b>4</b>
1.1. Governance.....	4
1.2. Version history .....	4
<b>2. Acknowledgement of Country</b> .....	<b>5</b>
<b>3. Introduction</b> .....	<b>5</b>
3.1. Purpose.....	5
3.2. Application .....	5
3.3. Key considerations .....	5
<b>4. Locality context</b> .....	<b>6</b>
4.1. Climate and weather .....	7
4.2. Geography.....	7
4.3. Sacred sites .....	7
4.4. Sites of conservation.....	7
4.5. Tourism.....	7
4.6. NT and local government.....	7
4.7. Building codes .....	8
4.8. Land use.....	8
4.9. Power generation and distribution .....	8
4.10. Water services .....	8
4.11. Health infrastructure .....	8
4.12. Emergency service infrastructure .....	8
4.13. Roads .....	8
4.14. Airports.....	9
4.15. Telecommunication.....	9
4.16. Local radio stations .....	9
4.17. Medically vulnerable clients.....	9
<b>5. Prevention</b> .....	<b>10</b>
5.1. Emergency risk assessments .....	10
5.2. Disaster hazard analysis and risk register .....	10
5.3. Hazard specific prevention and mitigation strategies.....	10
<b>6. Preparedness</b> .....	<b>11</b>
6.1. Planning .....	11
6.2. Emergency resources and contacts .....	11
6.3. Training and education .....	11
6.4. Community education and awareness .....	11
6.5. Exercises.....	11
<b>7. Response</b> .....	<b>12</b>
7.1. Control and coordination .....	12
7.2. Local Emergency Controller .....	12
7.3. Local Emergency Committee .....	12

7.4. Emergency Operations Centre/Local Coordination Centre .....	12
7.5. WebEOC.....	13
7.6. Situation reports .....	13
7.7. Activation of the Plan .....	13
7.8. Stakeholder notifications .....	14
7.9. Official warnings and general public information .....	14
7.10. Australasian Inter-Service Incident Management System .....	15
7.11. Closure of schools.....	15
7.12. Closure of government offices.....	15
7.13. Emergency shelters or strong buildings.....	15
7.14. Evacuation guideline.....	16
7.15. Identified Evacuation Centres .....	17
7.16. Register.Find.Reunite Registration and inquiry system.....	17
7.17. Impact assessment.....	17
<b>8. Recovery .....</b>	<b>18</b>
8.1. Local Recovery Coordinator and Coordination Committee.....	18
8.2. Transitional arrangements .....	18
<b>9. Debrief .....</b>	<b>19</b>
<b>10. Related references .....</b>	<b>19</b>
<b>11. Annexures .....</b>	<b>19</b>
11.1. Annex A: Functional groups - roles and responsibilities .....	20
11.2. Annex B: Functions table.....	21
11.3. Annex C: Prevention, mitigation strategies and action plans for identified hazards.....	24
11.3.1. Fire.....	24
11.3.2. Flood.....	27
11.3.3. Road crash.....	30
11.4. Annex D: Evacuation guideline.....	31
11.5. Annex E: Summary of response and recovery activities .....	39
<b>12. Acronyms .....</b>	<b>44</b>

# 1. Document control

## 1.1. Governance

Document title	Timber Creek Local Emergency Plan
Contact details	NT Emergency Service, Planning and Preparedness Command
Approved by	Territory Controller
Date approved	30 December 2014
Document review	Annually
TRM number	04:D23:71698

## 1.2. Version history

Date	Version	Author	Summary of changes
30/12/2014	1	John McRoberts	First version
04/11/2015	2	Reece P Kershaw	Reviewed and updated
03/12/2016	3	Kate Vanderlaan	Reviewed and updated
29/11/2018	4	Travis Wurst	Reviewed and endorsed by the Regional Controller, as the Territory Controller's delegate
12/02/2020	5	Michael Hebb	Reviewed and endorsed by the Regional Controller, as the Territory Controller's delegate
17/11/2020	6	Travis Wurst	Reviewed and endorsed by the Regional Controller, as the Territory Controller's delegate
13/01/2022	7	Janelle Tonkin	Reviewed and endorsed by the Regional Controller, as the Territory Controller's delegate
20/06/2023	8	Travis Wurst	Reviewed and endorsed by the Regional Controller, as the Territory Controller's delegate

Disclaimer: Every effort has been made to ensure that the information contained within this plan is accurate and where possible reflects current best practice. However, the Northern Territory Emergency Service does not give any warranty or accept any liability in relation to the content of material contained in the document.

## 2. Acknowledgement of Country

The Northern Territory Police, Fire and Emergency Services acknowledges the First Nations people throughout the Northern Territory, from the red sands of Central Australia to the coastal people in the Top End.

We recognise their continuing connection to their lands, waters and culture. We also pay our respects to the Aboriginal and Torres Strait Islander people with whom we work and who we serve and protect.

We pay our respects to the Aboriginal and Torres Strait Islander cultures, and to their leaders past, present and emerging.

## 3. Introduction

### 3.1. Purpose

The purpose of this Plan is to describe the emergency management arrangements for Timber Creek Locality (the Locality).

### 3.2. Application

This Plan applies to the Timber Creek Locality.

### 3.3. Key considerations

The *Emergency Management Act 2013* (the Act) is the legislative basis for emergency management across the Northern Territory (NT). The Act reflects an all hazards approach to emergency and disaster events, natural or otherwise. It provides for the adoption of measures necessary for the protection of life and property from the effects of such events.

The Act defines the emergency management structures, roles and responsibilities for the NT and, in conjunction with the Territory and Regional Emergency Plan(s), form the basis for this Plan.

This Plan:

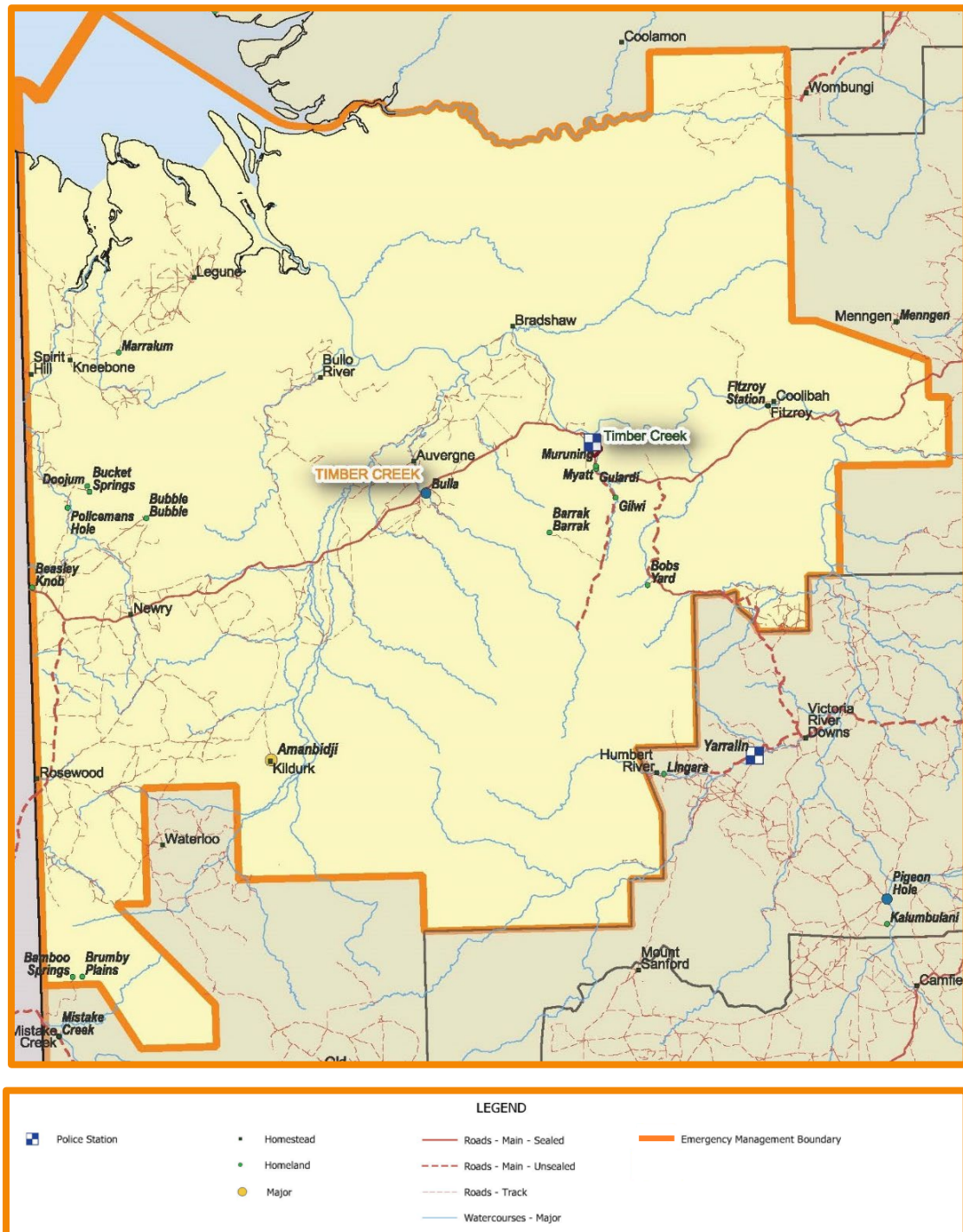
- confirms appointment of a Local Emergency Controller
- confirms establishment of the Local Emergency Committee (LEC)
- assesses hazards most likely to affect the community
- specifies control and coordination arrangements for mobilisation of local and, if necessary regional resources
- identifies roles and responsibilities of key stakeholders
- details specific emergency response procedures for the higher risk situations.

## 4. Locality context

This Plan complements the Northern Regional Emergency Plan<sup>1</sup> as it relates to the Locality. For further information on the hierarchy of plans, refer to the Territory Emergency Plan<sup>2</sup>. The Locality covers approximately 8,000 square kilometres (km) and is located 265 km due west of Katherine and forms part of the Northern Region, as defined by the Territory Emergency Plan.

The Locality comprises of 8 major communities close to the township of Timber Creek, being Innesvale/Menngen, Fitzroy, Gilwi, Gulardi, Myatt, One Mile/Muruning, Bulla, and Kildurk/Amanbidji. Populations of each location vary from 10 – 80 persons at any given time, depending on the season.

The population of the Locality is approximately 350, with an approximate 100 persons working onsite at Bradshaw, however, this number increases or decreases depending on weather conditions, school holidays, ceremonies, funerals and sporting events.



<sup>1</sup> More information can be found at: <https://www.pfes.nt.gov.au/emergency-service/publications>

<sup>2</sup> More information can be found at: <https://www.pfes.nt.gov.au/emergency-service/emergency-management>

## 4.1. Climate and weather

The Locality experiences similar weather conditions to those which occur throughout the Top End of the NT. There is a distinct Wet Season (November to April) and Dry Season (October to September). Compared to Darwin, temperatures tend to be slightly higher during the Wet Season and slightly lower during the Dry Season.

## 4.2. Geography

The Locality topography ranges from sea level to a highest point of approximately 370 metres (m) in the Pickerton Ranges. The Locality has a number of rivers and creeks, the main being as follows:

- Victoria River
- East Baines River
- West Baines River.

## 4.3. Sacred sites

The Aboriginal Areas Protection Authority (AAPA) is a statutory body established under the *Northern Territory Aboriginal Sacred Sites Act 1989* and is responsible for overseeing the protection of Aboriginal sacred sites on land and sea across the NT.

A sacred site is defined by the *Aboriginal Land Rights (Northern Territory) Act 1978* as being 'a site that is sacred to Aboriginals or is otherwise of significance according to Aboriginal tradition.' Sacred sites are typically landscape features or water places that are enlivened by the traditional narratives of Aboriginal people.

AAPA requests notification of any action that may have affected a sacred site.

For more information on sacred sites relevant to this Locality or to report an action that may have affected a sacred site, contact AAPA on (08) 8999 4365 or via email at [enquiries.aapa@nt.gov.au](mailto:enquiries.aapa@nt.gov.au).

## 4.4. Sites of conservation

The Victoria River middle reaches and Gregory (Judbarra) area is the site of conservation significance for this Locality. For further information about these sites contact the Department of Environment, Parks and Water Security (DEPWS)<sup>3</sup>.

## 4.5. Tourism

The Locality is exposed to tourism by way of through traffic, as well as the Gregory National Park and recreational fishing areas. Although on the increase, has no real impact on the Locality at this time. Often access to the Park is seasonal with roads becoming impassable during the Wet Season.

## 4.6. NT and local government

In March 2019, the NT Government (NTG) implemented 6 regional boundaries across the NT to strengthen the role of the Regional Network Group and align service delivery and reporting. This Locality sits within the Big Rivers Boundary.

NTG agencies that have a presence in the Locality include:

- NT Police, Fire and Emergency Services (NTPFES)
  - NT Police Force (NTPF) (police station)
  - NT Fire and Rescue Service (NTFRS) - Fire and Emergency Response Group (FERG)

---

<sup>3</sup> More information can be found at: <https://nt.gov.au/environment/environment-data-maps/important-biodiversity-conservation-sites/conservation-significance-list>

- Department of Health (DoH)
  - Timber Creek Community Health Centre, which also runs health centres at Bulla and Kildurk/Amanbidji
- Department of Education (DoE)
  - Timber Creek Primary School
  - Bulla Primary School
  - Kildurk/Amanbidji School

Timber Creek is within the Victoria Daly Regional Council (VDRC) region.

#### 4.7. Building codes

Buildings and construction in the Locality are subject to the *Building Act 1993* and the *Building Regulations 1993*.

#### 4.8. Land use

The Locality land use is subject to consultation between VDRC and Traditional Owners. In respect of Gregory National Park, about half of this site is Crown leasehold land. Much of the remaining land is Aboriginal freehold owned by 4 Aboriginal land trusts (Ngaliwurru/Nungali, Wanimiyn, Mayat and Menngen).

#### 4.9. Power generation and distribution

All power supplied to Timber Creek comes from diesel powered generators that are serviced by the Power and Water Corporation (PAWC).

#### 4.10. Water services

Timber Creek water is supplied from bores, which is supplied by diesel powered generators, serviced by the PAWC.

#### 4.11. Health infrastructure

Timber Creek Health Centre is serviced by Katherine West Health Board. The health centre has the capacity to provide emergency medical aid in addition to routine health treatment. Serious medical cases are required to be evacuated to Darwin. Patients can be evacuated either via road or air.

#### 4.12. Emergency service infrastructure

The Locality has the following emergency service infrastructure:

- police station and cells
- FERG Shed.

#### 4.13. Roads

The major roads in the Locality are as follows:

- Victoria Highway, which links Timber Creek with the township of Katherine in the east and Kununurra to the west. The highway is subject to flooding during the Wet Season and may be affected by numerous creek crossings depending on local rainfall.
- Buchanan Highway, which is approximately 30 km to the east of Timber Creek, intersecting the Victoria Highway. The Buchanan Highway leads to Top Springs and consists of 210 km of unsealed dirt.



- The Dashwood Crossing on the road to Top Springs will be impassable for most of the Wet Season.
- Duncan Highway, which is located approximately 170 km from Timber Creek, heading west. This highway is 470 km of unsealed road, which links the NT to Western Australia (Halls Creek).

#### 4.14. Airports

The table below lists the airstrips in the Locality:

Name of the strip	Datum	Details (type, length, etc.)	Operator of the strip
Timber Creek	15°37'19'S 130°26'40'E	Dimensions: 1038 m Surface: gravel Windsock: middle south of strip Fuel held: nil Lighting: runway 10/28 emergency lamps only	VDRC
VRD Station	16°24'S 131°00'E	Surface: unsealed gravel Windsock: yes Hazards: wildlife and cattle Fuel held: AVGAS/AVTUR Lighting: emergency lighting	VRD Station
Kildurk (Amanbidji)	16°25'S 129°36'E	Dimensions: 1000 m x 60 m Surface: unsealed Windsock: south of runway	Amanbidji Aboriginal Corporation
Bulla Camp	15°45'59'S 130°2'47.66'E	Dimensions: 1094 m x 35 m Surface: dirt	Ngaliwurru-Wuli Association

#### 4.15. Telecommunication

Telecommunications are available across the Timber Creek township via a combination of landline, mobile and satellite communications delivery. A new tower placement at the Bradshaw base will increase the mobile network coverage to the west and north east of the Locality.

#### 4.16. Local radio stations

Timber Creek does not have a local radio station, but has the following broadcasts:

- 106.9 FM Central Australian Aboriginal Media Association (CAAMA) Radio Station
- 105.3 FM Australian Broadcasting Corporation (ABC) Local Radio.

There are no backup generators to keep the radio tower powered in the event of a power outage. Portable generators are to be supplied by Bradshaw Contracting if required.

#### 4.17. Medically vulnerable clients

Timber Creek Health Centre has a list of medically vulnerable clients, and is updated regularly. There are aged care facilities in the Timber Creek area, the VDRC provides services for aged care residents, in conjunction with the health centre.

## 5. Prevention

### 5.1. Emergency risk assessments

The Timber Creek LEC are responsible for undertaking appropriate activities to prevent and mitigate the impact of emergencies in their Locality.

### 5.2. Disaster hazard analysis and risk register

The LEC has identified the following hazards for the Locality:

- fire (within Fire Protection Zones)
- flood
- heatwave
- major power outage
- road crash

These hazards have been rated against the National Disaster Risk Assessment Guidelines (NERAG):

Hazard	Overall consequence	Overall likelihood	Risk rating
Fire (within Fire Protection Zones)	Major	Unlikely	Medium
Flood	Moderate	Likely	Medium
Heatwave	Minor	Unlikely	Low
Major power outage	Moderate	Rare	Low
Road crash	Moderate	Likely	Medium

### 5.3. Hazard specific prevention and mitigation strategies

Prevention and mitigation relates to measures to reduce exposure to hazards and reduce or eliminate risk. Actions include identifying hazards, assessing threats to life and property, and from these activities, taking measures to reduce potential loss of life and property damage.

The cornerstone of mitigation is guided and coordinated risk assessments, which should involve all potentially affected members of a community. Strategies are developed based on a thorough understanding of hazards identified in emergency risk planning and their interaction with all aspects of society.

Specific prevention and mitigation strategies for identified hazards can be found at **Annex C**.

## 6. Preparedness

Arrangements to ensure that, should an emergency occur, all resources and services that are needed to provide an emergency response and or recovery can be efficiently mobilised and deployed.

### 6.1. Planning

NT emergency plans<sup>4</sup> are required by the Act and are maintained at a Territory, regional and local level. Arrangements in plans aim to be flexible and scalable for all hazards. The planning process enables agreements to be reached between people and organisations in meeting communities' needs during emergencies. The plan becomes a record of the agreements made by contributing organisations to accept roles and responsibilities, provide resources and work cooperatively.

The LEC is responsible for the annual review of operations and the effectiveness of the Local Emergency Plan, supported by the NT Emergency Service (NTES), Planning and Preparedness Command.

### 6.2. Emergency resources and contacts

The LEC is responsible for maintaining the emergency resource register and LEC contact list. Local emergency management stakeholders are to advise the Local Controller of changes to resource holdings, operational response capabilities and key personnel contacts. Emergency resource and LEC contact list for each locality are available on Web-based Emergency Operations Centre (WebEOC).

### 6.3. Training and education

The Act provides the legislative requirement for those involved in emergency management activities to be appropriately trained. Training and education activities are undertaken to ensure agencies are familiar with and understand the NT emergency management arrangements, as well as the relevant controlling and hazard management authorities for identified hazards.

The NTES Learning and Development Command is responsible for emergency management training across the NT. Online and face to face training is scheduled throughout the year.

### 6.4. Community education and awareness

Effective and ongoing community education and preparedness programs that emphasise to communities the importance of practical and tested emergency plans and safety strategies is essential. Empowering communities to act in a timely and safe manner will minimise the loss of life, personal injury and damage to property and contribute to the effectiveness of any warning system.

List of available activities and initiatives in the area:

- NTES hazard briefings
- NTES Paddy Program
- NTFRS Smart Sparx Program
- Red Cross Pillowcase Program
- St Johns Ambulance First Aid in Schools Program.

### 6.5. Exercises

Local level exercises are a key measure for testing the effectiveness of the local emergency plan and should involve all relevant stakeholders. Exercises ensure that the plan is robust and understood, and that capabilities and resources are adequate. Exercises are conducted if the plan has not been enacted since the last review, or substantial changes have occurred, including:

---

<sup>4</sup> More information can be found at: <https://pfes.nt.gov.au/emergency-service/publications>

- legislative changes
- major changes have occurred in the areas of key personnel, positions or functions across prevention, preparedness, response and recovery
- new or emerging hazards/risks have been identified.

The NTES Planning and Preparedness Command have developed resources that outlines the process to develop the exercise concept in designing, planning, conducting, facilitating, participating or evaluating exercises.

## 7. Response

Actions taken in anticipation of, during and immediately after an emergency to ensure that its effects are minimised and that people affected are given immediate relief and support.

### 7.1. Control and coordination

Arrangements for response are based on pre-agreed roles and responsibilities for stakeholders. When the scale and complexity of an event is such that resources of the community are depleted a number of arrangements are in place for assistance from the region, the Territory and/or the Australian Government. Pathway for assistance is through the Regional Controller.

### 7.2. Local Emergency Controller

In accordance with section 76 of the Act, the Territory Controller or their delegate (section 112 of the Act) can appoint a Local Emergency Controller (Local Controller). The Local Controller is the Officer in Charge of Timber Creek Police Station. The Local Controller is subject to the directions of the Regional Controller. The powers, functions and directions of the Local Controller can be found in sections 77, 78 and 79 of the Act.

### 7.3. Local Emergency Committee

In accordance with section 80 of the Act, the Territory Controller has established a Timber Creek LEC. The Local Controller is Chair of the LEC and remaining membership consists of representatives from NTG and non-government entities within the locality. Division 11 of the Act specifies the establishment, functions, powers; membership and procedure requirements of a LEC.

### 7.4. Emergency Operations Centre/Local Coordination Centre

NT emergency management arrangements	Controlling authority arrangements
Emergency Operations Centre (EOC) (Territory and Regional level)	Incident Control Centre (ICC)
Local Coordination Centre (LCC) (Local level)	Incident Control Point (ICP)

LCCs will be established as required by Local Controllers to provide a central focus to the management, control and coordination of emergency operations in the Locality. When activated, the functions of the LCCs are:

- information collection and dissemination
- preparation and issue of official warnings and advice to the public
- coordination of the provision of resources required in the Locality
- submitting requests for resources through the Regional Controller to the Territory EOC where applicable
- dissemination of information to the media and general public.

The LCC for this Locality is the Timber Creek Police Station. The Regional EOC will be located in Darwin at the Peter McAulay Centre. Agencies and functional groups may establish their own coordination centres to provide the focal point for the overall control and coordination of their own agency resources. Liaison Officers from functional groups and support agencies will attend the EOC as required.

ICCs will be established as required by a controlling authority to provide an identified facility for the management of all activities necessary for the resolution of an incident.

An ICP is normally located near the incident in its early stages but may be relocated to an ICC where more permanent and convenient facilities and services are available.

## 7.5. WebEOC

WebEOC is a critical information management system used throughout the NT for emergency management activities. The system is owned and maintained by NTPFES. The online platform is used for the coordination of multi-agency response to, and recovery from, an emergency event. WebEOC also enables real-time information sharing across all NTG agencies involved in emergency management activities.

## 7.6. Situation reports

It is essential for effective control and coordination of emergency management operations that the Local Controller is able to gather and collate relevant information relating to the emergency from regular, concise and accurate situation reports (SITREPs).

LEC members are to provide SITREPs at agreed times to enable the preparation of a consolidated report which will be distributed to all committee members and other relevant authorities. This may be achieved through WebEOC.

## 7.7. Activation of the Plan

This plan has 5 stages of activation. These stages are designed to ensure a graduated response to hazardous events, thereby reducing the possibility of under or over reaction by the emergency management agency. The stages are:

Stage 1	Alert	This stage is declared when the Local Controller receives warning of an event which, in their opinion, may necessitate an emergency management response
Stage 2	Standby	This stage is declared when the Local Controller considers an emergency operation is imminent. During this stage passive emergency measures are commenced.
Stage 3	Activation	This stage is declared when active emergency measures are required.
Stage 4	Stand-down response operations and transition to Recovery	Stage 4 occurs when the Local Controller and Local Recovery Coordinator agree to transition to recovery (if required) in accordance with the transitional arrangements of this Plan.
Stage 5	Recovery	This stage is called if ongoing recovery operations and coordination is required.

The stages identified provide for a sequential response. However, it may be necessary because of the degree of warning and speed of onset of an event, for the Local Controller to skip the actions required under stage 1 or 2.

## 7.8. Stakeholder notifications

Upon activation of the Plan the following personnel are to be advised as a matter of urgency:

- all available members of the LEC
- Northern Regional Controller
- NTES Territory Duty Officer (TDO).

## 7.9. Official warnings and general public information

Official warnings and general public information will be broadcast to the Locality through the following means:

- radio broadcast
- television news broadcast
- Secure NT website and social media broadcasts and updates.

Official warnings are issued by the Bureau of Meteorology (the Bureau), Geoscience Australia, Bushfires NT (BFNT) and the NTPFES.

Emergency Alert is a national telephony-based emergency warning system that can deliver warning messages to landlines and mobile handsets based on the service address and mobile handsets based on the last known location of the device. Authority to utilise the Emergency Alert may be given by virtue of the pre-approval of a hazard specific emergency plan or under the Territory Emergency Plan.

The approval for the release of an Emergency Alert message can only be authorised by one of the following:

- Territory Controller
- Director, NTES
- Regional Controller
- Chief Fire Officer, NTFRS
- Deputy Chief Fire Officer, NTFRS
- Executive Director, BFNT
- Chief Fire Control Officer, BFNT.

The Standard Emergency Warning Signal (SEWS) is an audio alert signal (wailing siren) which may be broadcast on public media to draw attention to the fact that an urgent safety message is about to be made. Generally, SEWS is only played before announcements concerning significant emergencies where emergency management arrangements should be activated as a result.

Control and hazard management authorities may have pre-planned use of SEWS for non-weather related events, through a pre-approved hazard-specific emergency plan.

The approval for the release of a SEWS message can only be authorised by one of the following:

- Territory Controller
- Director, NTES
- Manager Hazard Preparedness and Response NT (the Bureau) (for weather and flood-related events).

Warning and information messages for general public are authorised by the Regional or Incident Controller. The dissemination of such emergency warnings and information is to be by whatever means are appropriate and available at the time.

## 7.10. Australasian Inter-Service Incident Management System

The Australasian Inter-Service Incident Management System (AIIMS)<sup>5</sup> is a robust incident management system that enables the seamless integration of activities and resources of a single agency or multiple agencies when applied to the resolution of any event.

## 7.11. Closure of schools

The decision to close schools due to an impending threat will be made by the Chief Minister on advice from the Territory Emergency Management Council (TEMCO). When the nature of an event demands an immediate response, local authorities will take the appropriate steps to ensure the safety to the public. This action may include the temporary closure of a school to begin preparations, pending formal closure of the school by the Chief Minister for the remainder of the event.

The decision to reopen schools will be made by the Chief Minister on advice from the Chief Executive, DoE.

## 7.12. Closure of government offices

The decision to close government offices due to an impending threat will be made by the Chief Minister on advice from the TEMCO. When the nature of an event demands an immediate response, local authorities should take all appropriate steps to ensure public safety and the protection of property.

The decision to reopen government offices will be made by the Chief Minister on advice from the TEMCO.

All NTG agencies are to have an Emergency Preparedness Plan which sets out their processes for closing down their offices once approval has been given. This should have clearly articulated employee guidelines to ensure employees know when they are authorised to leave and are required to return to work.

## 7.13. Emergency shelters or strong buildings

Emergency shelters and places of refuge are buildings or structures that provide people with a place of protection and shelter during a disaster or emergency event such as a cyclone, flood or fire.

The recognised emergency shelters within the Locality are:

- Timber Creek Council Building 220 capacity
- Timber Creek Primary School 100 capacity.

The DoE, in conjunction with the NTPF and the shelter owners, is responsible for the management of emergency shelters during an emergency event.

The responsibilities of the emergency shelter manager are:

- the provision of personnel to staff and operate the emergency shelters at such times as they are activated
- the maintenance of effective liaison with other stakeholders with responsibilities relating to shelters, in particular the NTPF.

Emergency shelters are opened under the direction of the Territory or Regional Controller in consultation with the Shelter Group (DoE). Emergency shelters will not normally operate for more than 48 hours.

The timing of the opening of emergency shelters will be dependent upon the severity of the impending incident, the numbers to be sheltered, the time of day the incident is expected to impact and the period of time the emergency shelters are likely to be occupied. The announcement that emergency shelters are open in the Locality will be made by radio broadcast and social media, and will include emergency shelter rules such as no pets or alcohol being permitted in shelters and that food will not be provided.

---

<sup>5</sup> More information can be found at: <https://pfes.nt.gov.au/emergency-service/publications>

## 7.14. Evacuation guideline

Evacuation is a risk management strategy that can be used to mitigate the effect of an emergency or disaster on a community. It involves the movement of people to a safer location and their return. The decision to evacuate a community, including establishing an evacuation centre, is not taken lightly as it represents significant resource and financial implications.

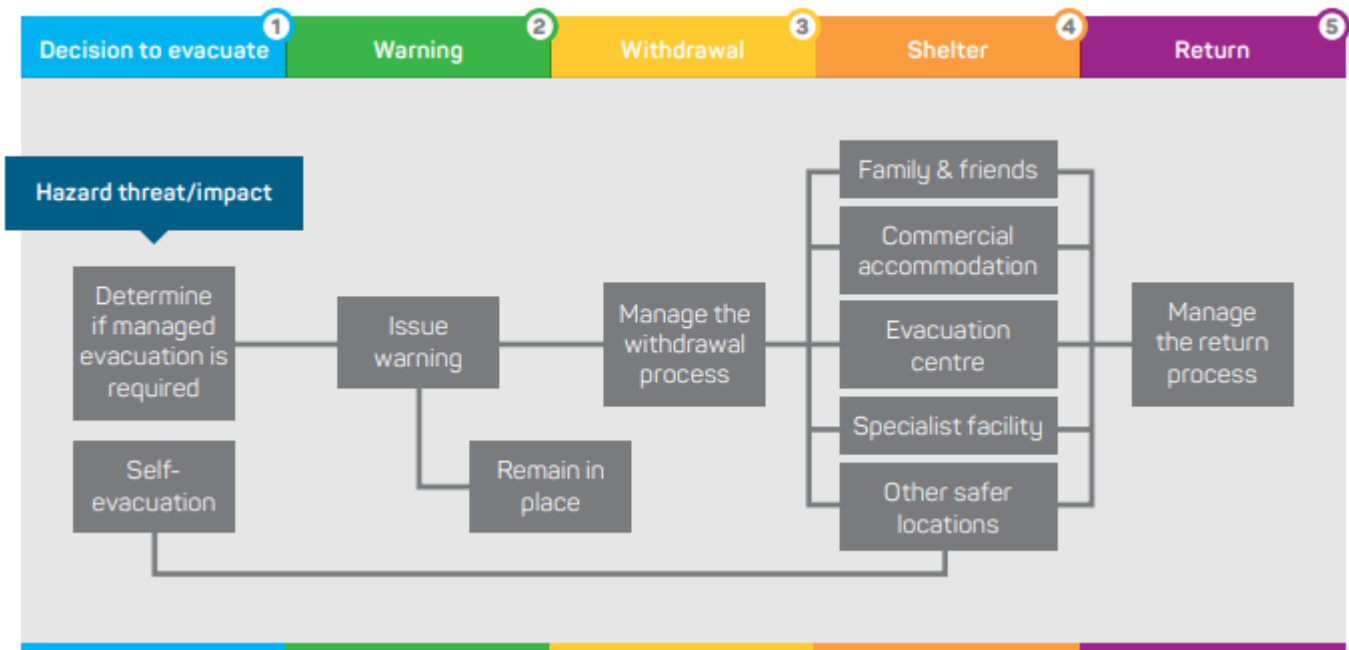
Evacuation of the Locality will be considered as a last resort. Where an evacuation is required the TEMC, in consultation with the Regional Controller, Local Controller and the LEC, will arrange emergency accommodation and transport, as necessary, through the relevant functional group/s.

An evacuation guideline for the Locality can be found at **Annex D**.

Evacuation is a complex process that has 5 distinct steps:

1. Decision
2. Warning
3. Withdrawal
4. Shelter
5. Return.

Each step is linked and must be carefully planned and carried out in order for the entire process to be successful. Given an evacuation centre will only be opened as a part an evacuation, it is vital to have an understanding of the 5-step process.



Source: Australian Institute of Disaster Resilience Evacuation Planning Handbook, 2017



## 7.15. Identified Evacuation Centres

An evacuation centre is designed to accommodate people for short to medium periods of approximately 4 to 6 weeks, although this figure may vary.

An evacuation centre will provide some or all of the following services:

- meals
- beds
- linen
- personal support
- medical services (or access to them)
- assistance accessing finances and recreational activities.

An evacuation centre implies the provision of these services in contrast to an emergency shelter, in which people are expected to be self-sufficient.

For further information on evacuation centres/shelters management, refer to the NT Evacuation Centre Field Guide available on WebEOC.

## 7.16. Register.Find.Reunite Registration and inquiry system

Australian Red Cross, in partnership with the Australian Government Attorney-General's Department, has developed an improved system to help reunite families, friends and loved ones separated by an emergency. This system is called Register.Find.Reunite<sup>6</sup>.

This system can be initiated by either the Territory or Regional Controller without the national system being activated. Any activation of this system should occur in consultation with the Welfare Group in the first instance.

## 7.17. Impact assessment

Immediately after an emergency event, there is a need to identify and assess impacts to inform short and long-term recovery priorities. Comprehensive assessment of all impacts is a vital component of emergency response activities. Guidelines for the conduct of rapid assessments in the NT, including the establishment of dedicated Rapid Assessment Teams (RATs) to collect data in the field, have been developed.

The Survey, Rescue and Impact Assessment Group, led by the NTPFES, is responsible for coordinating rapid impact assessments. At the local level, Local Controllers should contact the Survey, Rescue and Impact Assessment Group lead to discuss impact assessments if deemed appropriate.

---

<sup>6</sup> More information can be found at: <https://register.redcross.org.au/>

## 8. Recovery

The coordinated process and measures for supporting emergency-affected communities in the reconstruction of physical infrastructure and restoration of the social, economic and natural environments.

### 8.1. Local Recovery Coordinator and Coordination Committee

When a region and/or locality has been affected by an event, the Regional Recovery Coordinator may appoint a Local Recovery Coordinator in accordance with section 87 of the Act. The Local Recovery Coordinator will establish a Local Recovery Coordination Committee (LRCC) drawing from membership of the LEC and other relevant members of the community as needed. The Local Recovery Coordinator reports directly to the Regional Recovery Coordinator.

Local Recovery Coordinator and Committee functions, powers and directions are established in Division 12 and 13 of the Act respectively.

### 8.2. Transitional arrangements

The transition from response to recovery coordination reflects the shift from the protection of life and supporting the immediate needs of the community to establishing longer term, more sustainable support structures.

The transition to recovery coordination occurs after the completion of the transition checklist and at a time agreed by the Territory Controller and Territory Recovery Coordinator in accordance with the Territory Emergency Plan.

Transition will occur when the Territory Recovery Coordinator is satisfied that the following has occurred:

- the Territory Controller has briefed the TEMC and the Territory Recovery Coordinator
- the Regional Controller has briefed the Regional Recovery Coordinator
- where there is significant changeover of personnel, the EOC planning operations and logistics sections have briefed incoming recovery planning, operations and logistics staff.

The Regional Recovery Coordinator will ensure all functional group leaders, agencies, support groups and other relevant stakeholders are notified prior to the transition to recovery. This notification is to include changes to relevant contact details and other pertinent information.

An example of response and recovery activities can be found at **Annex E**.

## 9. Debrief

Debrief processes embed continuous improvement into the delivery of emergency management activities. Consistent approaches to lessons learned encourage adaptability, and flexibility across all levels of government. Sharing of knowledge and experiences throughout emergency events assists with ongoing continuous improvement of people and organisations involved.

The NTG implements a lessons learned approach recognising the positive impact on organisational culture commensurate with increasing opportunities to achieve emergency management goals. Whilst lessons learned often begins in one agency through an internal debrief process, those lessons learned are transferable across multi-agencies.

During any operational response, personnel involved are encouraged to record activities where there are lessons to be learned. Activities can include decision making and consequential responses. Where decisions are made by an Incident Controller, Incident Management Team member or a functional group member, those decisions should be recorded in a Decision Log (WebEOC). Decision Logs can be referred to as part of the debrief process.

## 10. Related references

The following references apply:

- *Emergency Management Act 2013*
- *Northern Territory Aboriginal Sacred Sites Act 1989*
- *Aboriginal Land Rights (Northern Territory) Act 1978 (Cth)*
- *Building Act 1993*
- *Building Regulations 1993*
- Territory Emergency Plan
- Northern Region Emergency Plan
- National Disaster Risk Reduction Framework
- National Disaster Risk Assessment Guidelines
- Rapid Assessment Team Guidelines
- Transition to Recovery Checklist.

## 11. Annexures

Annex A Functional groups - roles and responsibilities

Annex B Functions table

Annex C Specific prevention, mitigation strategies and action plans for identified hazards

Annex D Evacuation guideline

Annex E Summary of response and recovery activities

## 11.1. Annex A: Functional groups - roles and responsibilities

Functional group	Local contact
Biosecurity and Animal Welfare	Department of Industry, Tourism & Trade (DITT)
Critical Goods and Services	DITT/Timber Creek Hotel
Digital and Telecommunications	NTPFES
Emergency Shelter	VDRC/Timber Creek Primary School
Engineering	Department of Infrastructure, Planning & Logistics (DIPL)
Industry	DITT
Medical	Timber Creek Health Clinic
Public Health	DoH
Public Information	Department of the Chief Minister & Cabinet (DCMC)
Public Utilities	PAWC Essential Services Officer (ESO)
Survey, Rescue and Impact Assessment	NTPFES
Transport	DIPL
Welfare	Department of Territory Families, Housing & Communities (TFHC)

Full details of functional group roles and responsibilities are detailed in the Territory Emergency Plan.

## 11.2. Annex B: Functions table

Emergency Response and recovery functions with identified agencies/organisation/provider  
During an event some of these functions may be needed at a local level.


Functions	Agency/organisation/provider responsible
Animal/livestock management	NT Parks & Wildlife
Anti-looting protection	NTPF
Banking services	Timber Creek Store ATM
Broadcasting: What radio stations provide announcements?	ABC Local Radio/CAAMA
Clearing of essential traffic routes	VDRC
Clearing storm water drains	VDRC
Clothing and household items	Timber Creek Store
Community clean up	VDRC
Control, coordination and management	Designated Control Authority
Coordination to evacuate public	NTPF
Critical Goods and Services (protect/resupply) <ul style="list-style-type: none"> <li>• food</li> <li>• bottle gas</li> <li>• camping equipment</li> <li>• building supplies</li> </ul>	Timber Creek Store/Timber Creek Hotel/Ngaliwurru-Wuli Association
Damaged public buildings: Coordination and inspections	DIPL
Disaster Victim identification capability	NTPF/Timber Creek Health Clinic
Emergency Alerts	NTPFES/BFNT
Emergency catering	VDRC/Timber Creek Aged Care
Emergency food distribution	VDRC
EOC, including WebEOC, Recovery coordination centre (RCC)	NTPFES/DCMC
Emergency shelter. Staff, operations and control	VDRC/Timber Creek Primary School

Functions	Agency/organisation/provider responsible
Evacuation centre - Staffing, operations and control	VDRC/Timber Creek Primary School
Financial Relief/assistance Disaster Recovery Funding Arrangements	Services Australia (Centrelink)
Identification of suitable buildings for shelters	DIPL
Interpreter services	Aboriginal Interpreter Service
Management of expenditure in emergencies	Controlling Authority and any activated Functional Groups at the direction of the Controlling Authority
Medical services	Timber Creek Health Clinic
Network communications (IT): Responders / Public Maintenance and restoration of emergency communication	Telstra
Personal support	Timber Creek Health Clinic/TFHC
Power: Protection and restoration:	PAWC
Public messaging during response and recovery	NTPFES/the Bureau/DCMC
Public/Environmental Health (EH) management <ul style="list-style-type: none"> <li>• all EH functions including water &amp; food safety</li> <li>• disease control</li> </ul>	DoH
Rapid Impact Assessment	NTPFES
Recovery coordination	DCMC
Repatriation	As detailed in local emergency arrangements
Restoration of public buildings	DIPL
Restoration of roads and bridges (council/territory) excluding railways	VDRC/DIPL
Road management and traffic control including public Information on road closures	VDRC/DIPL
Sewerage: Protection and restoration	PAWC ESO

Functions	Agency/organisation/provider responsible
Survey	NTPFES
Traffic control	NTPF
Transport : Commercial and Public airport/ planes, automobiles and buses	DIPL
Vulnerable groups	Timber Creek Health Clinic
Waste management <ul style="list-style-type: none"> <li>• collection</li> <li>• disposal of stock</li> </ul>	VDRC/NT Parks & Wildlife
Water (including drinking water): Protection and restoration	PAWC ESO

## 11.3. Annex C: Prevention, mitigation strategies and action plans for identified hazards

### 11.3.1. Fire

Hazard	Controlling authority	Hazard management authority
 Fire (within Gazetted Area)	NT Fire and Rescue Service	NT Fire and Rescue Service

A fire hazard is an event, accidentally or deliberately caused, which requires a response from one or more of the statutory fire response agencies.

**A fire hazard can include, but not limited to:**

Term	Definition
Structure fire	A fire burning part, or all of any building, shelter, or other construction.
Bushfire	An unplanned fire. It is a generic term that includes grass fires, forest fires and scrub fires. Bushfires are a natural, essential and complex part of the NT environment. The term bushfire is interchangeable with the term wildfire.
Vehicle fire	An undesired fire involving a motor vehicle.

#### Agency capabilities

NTFRS - Protects the Territorian community from emergencies involving fire, motor vehicle crashes and other dangerous situations, including hazardous materials and building collapse.

Under the Territory Emergency Plan NTFRS are the hazard management authority and controlling authority for fires within their jurisdiction. This means that the agency is responsible for managing technical aspects of responding to a fire and commanding its resources through their Incident Controller. This means that if a fire is occurring within an Emergency Response Area (ERA), then the NTFRS is the controlling and hazard management authority.

In areas that are located outside the NTFRS ERA and where there is no fire protection zone (BFNT), fire is the responsibility of the land owner or occupier. BFNT should be contacted when the owner or occupier are unable to control the fire. BFNT may contact the Local Controller to discuss local response arrangements and coordination of resources.

NTFRS identifies 3 classes of incidents and describes them in generic terms, as shown in the following table.

Incident classification	Description
Level 1	Level 1 incidents are generally characterised by being able to be resolved through the use of local or initial response resources only.
Level 2	Level 2 incidents may be more complex either in size, resources or risk. They are characterised by the need for: <ul style="list-style-type: none"> <li>• deployment of resources beyond initial response; or</li> <li>• sectorisation of the incident; or</li> <li>• the establishment of function sections due to the levels of complexity; or</li> </ul>



	<ul style="list-style-type: none"> <li>• a combination of the above.</li> </ul>
Level 3	Level 3 incidents are characterised by degrees of complexity that may require the establishment of divisions for effective management of the situation.




**Prevention and preparative controls include, but are not limited to:**

- A fire danger period is declared over large areas when climatic and seasonal conditions presents increased fire risk for a prolonged period of time. A fire danger period usually coincides with the accepted 'fire season' in an area. Broadly this is during the Australian summer months in central Australia and during the dry season further north. A permit to burn is required before using fire during a fire danger period in all zones
- A fire ban can be declared for up to 24 hours. A combination of factors are considered when declaring a fire ban period including forecast fire danger, ignition likelihood, hazards and resourcing. All permits to burn are revoked within the declared fire ban area
- A fire management area can be declared in an area where BFNT have identified heightened fire risk. A fire management plan can be prescribed for a fire management area, and the plan can require landowners to take action to prepare for, or prevent, the spread of fire
- Additional fire regulations apply within NTFRS ERA and BFNT Fire Protection Zones. Permits to burn are required throughout the entire year inside an ERA or Fire Protection Zones and a minimum 4 m wide firebreak within the perimeter boundary of all properties and additional firebreaks around permanent structures and stationary engines is required within Fire Protection Zones
- BFNT Regional Fire Management Plan
- Establishment of an Incident Management Team with liaison officers from other agencies to assist
- Radio, television and social media posts.

**Warnings and advice approval flows:**

The Australian Warning System is a new national approach to information and warnings during emergencies like bushfire. The System uses a nationally consistent set of icons, like those below.

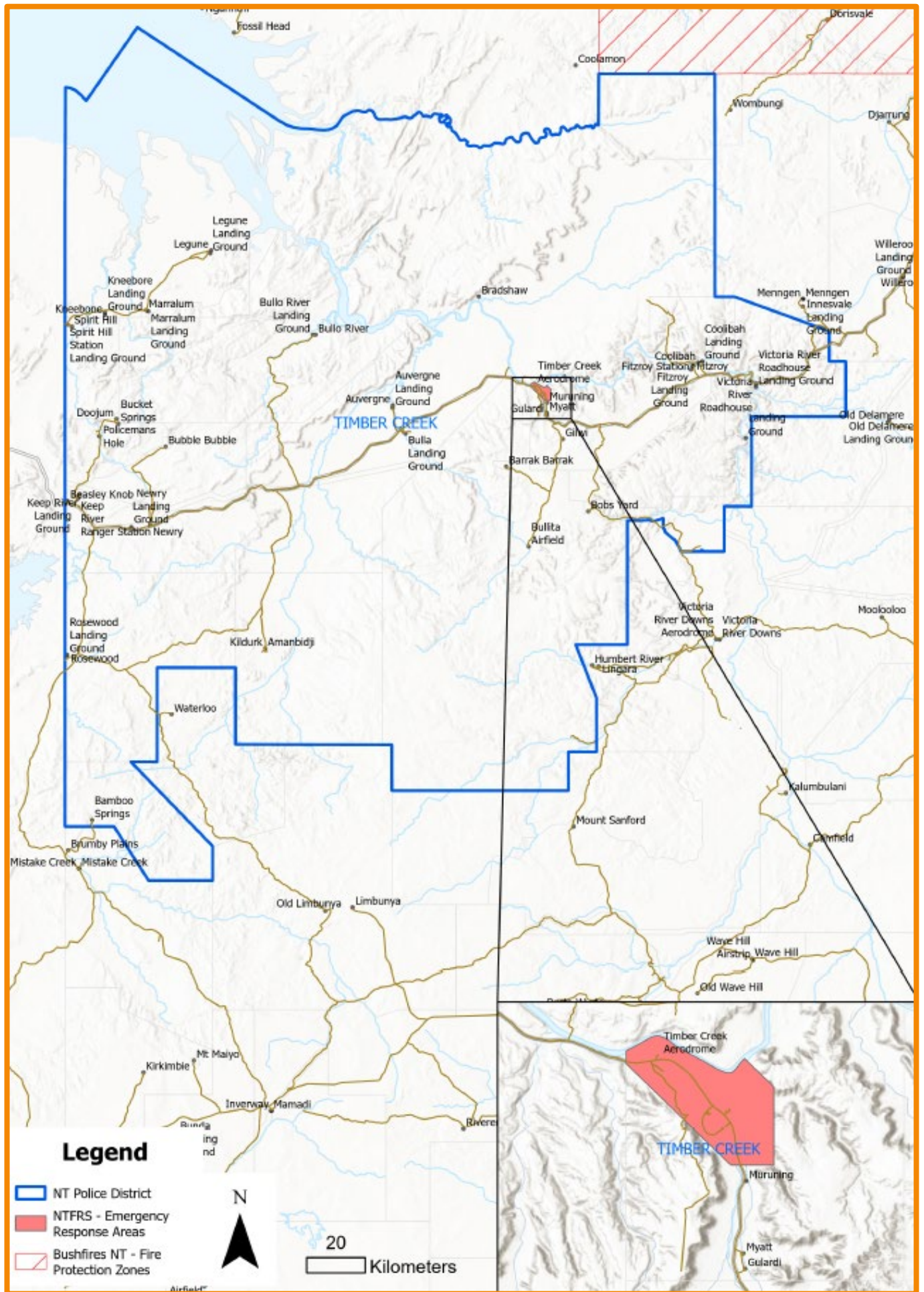
**There are 3 warning levels:**

	Warning level	Description
	Advice (Yellow)	An incident has started. There is no immediate danger. Stay up to date in case the situation changes
	Watch and Act (Orange)	There is a heightened level of threat. Conditions are changing and you need to start taking action now to protect you and your family
	Emergency Warning (Red)	An Emergency Warning is the highest level of warning. You may be in danger and need to take action immediately. Any delay now puts your life at risk

Each warning level has a set of action statements to give the community clearer advice about what to do. Calls to Action can be used flexibly across all 3 warning levels depending on the hazard.

All warnings and advice will be issued by the Incident Controller from the NTFRS as the controlling authority for fire within an emergency response area.

# Fire ERA map - Timber Creek



### 11.3.2. Flood

Hazard	Controlling authority	Hazard management authority
 Flood	NT Police Force	NT Emergency Service

The Timber Creek Locality may be subject to inundation caused by seasonal monsoonal/severe storm activity. When such inundation occurs, access by both air and road will be severely restricted. Inundation (also known as pluvial flooding) occurs when an area receives a large amount of water in a short amount of time which causes localities to be submerged. In the NT, this can include when a riverbank is at risk after several days of heavy rain.

A flood hazard includes a flood threat to the township, housing and infrastructure of the Locality including the surrounding areas. The Bureau will issue a Flood Watch advice with up to 4 days lead time in situations where forecast rainfall and catchment conditions may lead to flooding<sup>7</sup>.

Historical research of river levels, dating back to 1960, which are made available by the DEPWS, shows that the Timber Creek has threatened the community with levels recorded at the police station, registering the following flood levels:

- 1960, March 7.61 m Australian Height Datum (AHD)
- 1964, March 10.74 m AHD
- 1966, March 8.20 m AHD
- 1968, January 7.31 m AHD
- 1974, March 14.4 m AHD
- 1991, February 15.2 m AHD
- 2006, April 21 m AHD.

Little Horse Creek

- 1991, February 13.2 m AHD.

Whilst there are no gauging stations for the locality, the following table provides guidance for riverine flooding on NT communities. The indicative impact of floods levels indicated in the table below:

Flood Classification	Consequence
Minor	Causes inconvenience. Low-lying areas next to water courses are inundated. Minor roads may be closed and low-level bridges submerged. In urban areas inundation may affect some backyards and buildings below the floor level as well as bicycle and pedestrian paths. In rural areas removal of stock and equipment may be required.
Moderate	In addition to the above, the area of inundation is more substantial. Main traffic routes may be affected. Some buildings may be affected above the floor level. Evacuation of flood affected areas may be required. In rural areas removal of stock is required.
Major	In addition to the above, extensive rural areas and/or urban areas are inundated. Many buildings may be affected above the floor level. Properties and towns are likely to be isolated and major rail and traffic routes closed. Evacuation of flood affected areas may be required. Utility services may be impacted.

<sup>7</sup> More information can be found at: [http://www.bom.gov.au/cgi-bin/wrap\\_fwo.pl?IDD60022.html](http://www.bom.gov.au/cgi-bin/wrap_fwo.pl?IDD60022.html)

The Locality is drained by a number of rivers and creeks, the main being as follows:

- Victoria River
- East Baines River
- West Baines River
- Sandy Creek
- Skull Creek
- Timber Creek.

The Victoria River is the NT's longest river and it has a number of significant tributaries. The headwaters of the Victoria River lie to the south/east of the site but the middle reaches of the river cross the site from east to west and numerous tributaries drain the ranges and hills and feed into it. The highway crosses Victoria River near Timber Creek, and this crossing is particularly flood-prone in the Wet Season. Water overtopping the bridge can cut the Victoria Highway, which is the main access between Western Australia – NT, for days or even weeks during the November - April rainy period.

In May 2008 a project was undertaken to replace the old bridge with a higher one. At 19.5 m (64 feet), it is high enough to avoid most floods. Only an average of one-in-20 year floods will be high enough to flood over the new bridge. Additional bridges and height increases of other sections of the highway were undertaken at the same time.

During the Wet Season the Timber Creek Locality can experience local flooding, especially if the Victoria River levels are already at full capacity, restricting and delaying drainage of floodwaters from the catchment and feeding river systems.

Rainfall and selective river level information is also provided by the Bureau. This information supplements that provided by DEPWS and is collected, collated and disseminated by the NTES to the Timber Creek LEC and the public. The Bureau currently has within the catchment area 12 daily rainfall reporting stations which have been equipped with Remote Observer Terminals as part of the Flood Early Warning upgrade.

Telemetry gauging stations, as well as tipping bucket rain gauges are located at Dashwood Crossing, Coolibah Homestead, Kalkarindji Police Station and Wickham River. Kalkarindji, Dashwood Crossing, Wickham River and Coolibah Homestead are all connected to the system. This station will provide a rainfall input for the smaller tributaries between Dashwood Crossing and Coolibah Homestead.

As the Hazard Management Authority the NTES have established, equipped and trained 3 volunteer units within the Darwin Locality, to support response and recovery operations to flood events.

The NTES maintain the Territory EOC in a state of readiness. If the EOC is required to be activated by the Local Controller, the NTES will support this activation and facilitate, where possible, the staffing requests for IMT personnel.

**Prevention and preparative controls include, but are not limited to:**

- the Bureau weather/flood warnings/advice
- Road closures on flooded causeways.

**Public safety message process:**

- the Bureau issues a flood advice to NTES TDO
- NTES TDO notifies Local Controller and NTES Northern Command Manager
- Local Controller notifies LEC
- NTES Northern Command Manager consults with the Bureau and Incident Controller to determine recommended messaging
- NTPFES Media and Corporate Communications Unit or Public Information Group receives approved messaging to publish.

**Actions to be taken – Flood – guide only**

Organisation/ Provider	Flood Watch	Inundation
All members	Attend LEC meetings Relay information to other key stakeholders	Assist where necessary and ensure all procedures for each location/area to be affected is well prepared
Local Controller	Update LEC members of the impending situation	SITREP is to be circulated to committee members and key stakeholders

### 11.3.3. Road crash

	Hazard	Controlling authority	Hazard management authority
	Road Crash	NT Police Force	NT Fire and Rescue Service

A road crash occurs when a vehicle collides with another vehicle, pedestrian, animal, road debris, or other stationary obstruction, such as a tree, pole or building. Road crashes often result in injury, disability, death, and or property damage as well as financial costs to both society and the individuals involved. Emergency services are frequently called on to extricate seriously injured casualties from their vehicles following road crashes. This is achieved by employing space creation techniques to create openings in the vehicle. These openings make it possible to administer first aid to the casualty and to remove them from the vehicle.

A number of factors contribute to the risk of collisions, including vehicle design, speed of operation, road design, weather, road environment, driving skills, fatigue, impairment due to alcohol or drugs, and behaviour, notably aggressive driving, distracted driving, speeding and street racing.

Responses to road crash incidents will be coordinated from the JESCC. NTFRS will respond as per pre-determined response arrangements contained within the Intergraph Computer-Aided Dispatch (ICAD) system for incidents occurring within an NTFRS ERA. For incidents occurring outside of an ERA, response will be approved by the rostered NTFRS TDO.

**Prevention and preparative controls include, but are not limited to:**

- radio, television and social media posts
- targeted road safety campaigns
- community engagement strategies
- training in PUASAR024 - undertake road crash rescue delivered by NTES and NTFRS to NTPFES members.

**Public safety message process:**

- NTPF Territory Duty Superintendent to approve public messaging and forward to NTPFES Media and Corporate Communications Unit for dissemination.

## 11.4. Annex D: Evacuation guideline

The following is to be used as a guide only.

Stage 1 - Decision		
Authority	<p>The Regional Controller will authorise the activation of the evacuation plan.</p> <p>This evacuation plan is to be approved by the TEMC prior to activation.</p>	Regional Controller in conjunction with TEMC
Legal references	The Act and approved Local Emergency Plan. It is recommended that the Minister declares an Emergency Situation under section 18 of the Act, when this evacuation plan is activated.	
Alternative to evacuation? I.e. shelter in place, temporary accommodation on-site/nearby.	If needed residents will be progressively relocated within the community to <location to be determined>.	Local Controller to arrange
Summary of proposed evacuation	<p><b>Decision</b> – made by the Regional Controller when the community have sustained damage during &lt;to be determined&gt; that cannot support residents in situ during recovery.</p> <p>The Local Controller to disseminate information to the community.</p> <p><b>Withdrawal</b> – three stage process:</p> <ol style="list-style-type: none"> <li>1. &lt;location to be determined&gt;; community to the &lt;location to be determined&gt;; to be registered for evacuation to &lt;location to be determined&gt;</li> <li>2. once registered, groups to move to the airstrip assembly area using buses/vehicles</li> <li>3. Red Cross to register check utilising Register Find Reunite.</li> </ol> <p><b>Shelter</b> – evacuees will be encouraged to stay with friends or family. The remainder will be accommodated at an evacuation centre &lt;Location to be determined&gt;</p> <p><b>Return</b> – to be determined once recovery can sustain return to &lt;location to be determined&gt;.</p>	The decision will be informed by additional advice from technical experts, e.g. the Bureau.
Which communities/outstations or geographical area does the evacuation apply to?	<Out stations, Homelands and homesteads>	
Vulnerable groups within the community	The Medical Group will liaise with local health staff and provide information on medically vulnerable people.	Medical Group & Transport Group to action.

	The identified people will be evacuated <at a time to be determined>.	
Community demographics (approx. total number, family groups, cultural groups etc.)	<p>For more information, refer to the Evacuation Centre Field Guide (page 20 section 4.3) which can be found in WebEOC.</p> <p>Examine the demographic breakdown of the community to be evacuated including:</p> <ul style="list-style-type: none"> <li>• the total number of people being evacuated</li> <li>• an estimate of the number of people likely to require accommodation in the evacuation centre</li> <li>• a breakdown of the evacuees to be accommodated by age and gender. For example, the number of family groups and single persons, adult males and females, teenage males and females, and the number of primary school-aged children, toddlers and infants</li> <li>• a summary of cultural considerations, family groups, skin groups and community groups</li> <li>• potential issues that may arise as a result of these groups being accommodated in close proximity to one another</li> <li>• a summary of people with health issues, including chronic diseases, illnesses and injuries.</li> <li>• details of vulnerable clients (other than medically vulnerable), such as the elderly, frail and disabled (and if they are accompanied by support i.e. family members)</li> <li>• details of community workers also being evacuated who may be in a position to support the operation of the evacuation centre. Examples include teachers, nurses, health workers, shire staff, housing staff and police.</li> </ul>	
What is the nature of the hazard?	<To be determined>	
Estimated duration of the potential evacuation?	<To be determined>	



<b>Triggers for the evacuation</b>	<b>Example</b> <ol style="list-style-type: none"> <li>1. evacuation planning to commence when the Locality is under a &lt;to be determined&gt;</li> <li>2. implement evacuation if the severity and impact has caused major damage and disruption to all services</li> <li>3. elderly and vulnerable people are to be considered for evacuation due to limited health services.</li> </ol> <p>Further details of the intra-community relocation plan are required.</p>	Regional Controller
<b>Self-evacuation</b>	Where possible residents will be encouraged to self-evacuate and make their own accommodation arrangements if they wish to do so. Individuals and families taking this option will be encouraged to register prior to leaving the community.	Local Controller
<b>Responsibility for the coordination Stage 1</b>	Regional Controller Local Controller	
<b>Stage 2 – Warning</b>		
<b>Who has the authority to issue warnings?</b>	<p>The Bureau will issue advice and warnings. All further public information will be approved by the Regional Controller in consultation with the Public Information Group and NTES.</p> <p>The Local Controller will coordinate the dissemination of community level information.</p> <p>A combination of the following will be utilised:</p> <ul style="list-style-type: none"> <li>• broadcasted over radio and television</li> <li>• social media utilising the NTPFS Facebook page SecureNT twitter feed.</li> <li>• loud hailer</li> <li>• door to door</li> <li>• Emergency Alert System.</li> </ul>	Regional Controller to liaise with Public Information Group and NTES
<b>Process for issuing evacuation warnings and other information</b>	At community level, the Local Controller is to appoint a community spokesperson to disseminate up to date situational information at community meetings which are to be held immediately post a convening LEC meeting, at each declared stage of the Local Emergency Plan. A media brief approved by the Local Controller at each LEC meeting, will be announced over the local radio station containing current situational information, relevant safety information, what to prepare, when to self-evacuate, and where to go.	Local Controller

When will warnings be issued (relative to the impact of the hazard)?	Immediately upon a decision to evacuate being made the LEC will commence coordinating residents to prepare for transport.	Local Controller
What information will the messages contain? (What do people need to know?)	To be determined: <ul style="list-style-type: none"> <li>• outline of the proposed evacuation plan</li> <li>• measure to prepare residences</li> <li>• safety issues; not overloading transport</li> <li>• items to bring on the evacuation</li> <li>• arrangements for pets and animals.</li> </ul>	Local Controller Biosecurity & Animal Welfare Group liaison
Responsibility for the coordination of Stage 2	Local Controller/Regional Controller	
<b>Stage 3 - Withdrawal</b>		
Outline	Three stage process: <ol style="list-style-type: none"> <li>1. community residents to &lt;staging area 1&gt;</li> <li>2. &lt;staging area 1&gt; to airport</li> <li>3. airport to &lt;location to be determined&gt; evacuation centre</li> </ol>	
Timber Creek community to the airstrip	<p><b>Lead</b></p> <ul style="list-style-type: none"> <li>• NTPF</li> </ul> <p><b>Overview</b></p> <ul style="list-style-type: none"> <li>• the community will gather at the &lt;location to be determined&gt; prior to being transported by community buses to the airstrip.</li> </ul> <p><b>Risks/other considerations</b></p> <ul style="list-style-type: none"> <li>• evacuation should be undertaken during daylight hours, if possible.</li> <li>• risks include inclement weather, persons with infectious diseases, vulnerable persons, and frail/elderly persons, chronically ill</li> <li>• estimated time en-route: ___ minutes each way</li> <li>• estimated timeframe overall: ___ hours utilising current resources.</li> <li>• alternate transport options.</li> </ul>	NTPF

<p><b>Assembly area</b></p>	<p>Likely location of evacuation centre: &lt;to be determined&gt;.</p> <p>Additional resources will be required to host an evacuation centre in the form of tents and bedding. This will also be the point where evacuee registration will take place. Basic services should be provided i.e. drinking water, information.</p> <p><b>Services to be provided</b></p> <ul style="list-style-type: none"> <li>• Red Cross Coordinator: Red Cross</li> </ul> <p><b>Other details</b></p> <p>Evacuee registration. Residents will need to register at &lt;location to be determined&gt; or airport if (self-evacuating) to be permitted access to the evacuation centre at the &lt;location to be determined&gt;.</p>	<p>NTPF/TFHC</p>
<p><b>Timber Creek community to &lt;location to be determined&gt;</b></p>	<p><b>Lead - NTPF</b></p> <p><b>Example Lead - Transport Group</b></p> <p><b>Overview</b></p> <ul style="list-style-type: none"> <li>• Transport Group has identified commercial operators and the Police Air Section able to provide evacuation assistance.</li> <li>• Total proposed air assets: _____. Commercial operators will be charging commercial rates for their services at a cost of (\$_____).</li> <li>• The operation will begin at _____hrs with the first aircraft, leaving &lt;to be determined&gt; and arriving at _____hrs</li> <li>• The operation will continue throughout the day until all community members are evacuated. It is estimated that all community members can be evacuated by _____hrs (arriving in &lt;to be determined&gt;).</li> </ul>	<p>NTPF/Transport/Logistics</p>

<p>&lt; Location &gt; airport to evacuation centre &lt;to be determined&gt;</p>	<p><b>Lead - Transport Group</b></p> <p><b>Example</b></p> <p><b>Overview</b></p> <ul style="list-style-type: none"> <li>• Buses (Buslink) will be on standby at</li> <li>• &lt;location to be determined&gt; airport from ____am to receive passengers and continue throughout the day transferring to &lt;to be determined&gt; only, as required.</li> <li>• Transport staff will be on the ground at &lt;location to be determined&gt; airport to marshal passengers on buses only.</li> <li>• Buses to be arranged by the Transport Group. Evacuees will be collected from &lt;location to be determined&gt; airport and transported to the &lt;location to be determined&gt;.</li> </ul> <p>A reception team provided by NTPF will meet evacuees and facilitate transport.</p> <ul style="list-style-type: none"> <li>• details &lt;to be determined&gt;</li> <li>• estimated time en-route: ____ minutes</li> <li>• estimated timeframe: possibly ____ hours, dependant on aircraft arrivals</li> <li>• alternate transport options: ____.</li> </ul>	<p>Transport Group</p>
<p><b>End point</b></p>	<p>&lt;location to be determined&gt;</p>	<p>EOC/welfare coordination</p>
<p><b>Transport of vulnerable members of the community</b></p>	<p>Medical Group to arrange transport of vulnerable people from the community to &lt;location to be determined&gt;.</p>	<p>Medical Group</p>
<p><b>Registration and tracking</b></p>	<ul style="list-style-type: none"> <li>• Welfare Group to activate registration arrangements. Registration will be undertaken by NTPF and will occur at &lt;location to be determined&gt;.</li> <li>• Names of evacuees will be obtained prior to boarding buses.</li> <li>• Where possible details of individuals and families self-evacuating to be obtained on arrival at the &lt;location to be determined&gt; airstrip.</li> <li>• If persons are not registered as evacuees or self-evacuees they will not be provided access to the evacuation shelter.</li> </ul>	<p>Welfare Group/ NTPF</p>

Coordination Stage 3	Regional Controller	EOC coordination.
<b>Stage 4 – Shelter</b>		
Overview	An evacuation centre will be established at the <location to be determined>. The <location to be determined> will be the primary areas used.	
Alternate shelter options	Where possible evacuees will be encouraged to seek alternative accommodation with family, friends or through commercial accommodation.	
Estimated duration of the shelter phase	To be determined	
Arrangements for domestic animals	No domestic animals are to accompany evacuees. Any self-evacuees with domestic animals will be expected to make their own arrangements for the animals.	Advise Animal Welfare
Roles		
• Director	TFHC	Welfare Group
• Deputy Director	TFHC	Welfare Group
• Logistics/planning	EOC	Controlling Authority
• Admin teams	EOC	DCMC/Welfare Group
• Shift manager/s	To be determined – drawn from pool of trained staff.	Welfare Group
• Welfare team	To be determined	Welfare Group
• Facility team	To be determined	
• Sport and Rec team	To be determined	
• Medical team	To be determined. It is likely St Johns volunteers will be requested. Evacuees will be referred to off-site medical services.	Medical Group
• Public health team	To be determined	Public Health Group
• Transport team	To be determined	Transport Group

Evacuation centre set-up	Refer to the evacuation centre template for set-up considerations.	
What strategy will be put in place to close the evacuation centre?	Closure of the evacuation centre will be largely dependent on the extent of inundation and complexity of the recovery process.	
<b>Stage 5 – Return</b>		
Indicators or triggers that will enable a return	(Refer to Recovery action plan for the community) DCMC	
Who is responsible for developing a plan for the return?	Recovery coordination in conjunction with Incident Management Team (IMT).	
• Transportation	To be determined	
• Route/assembly points en-route	To be determined	
• End point	To be determined	
How will information about the return be communicated to evacuees?	To be determined	
What information needs to be conveyed to the evacuated community members?	To be determined	

## 11.5. Annex E: Summary of response and recovery activities

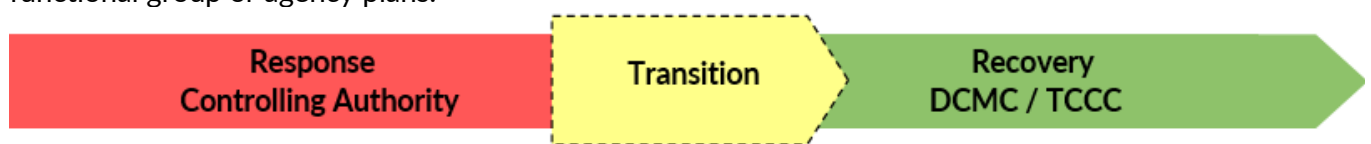
The following table outlines a summary of possible response and recovery activities to be considered following an event.

This table is presented as a guide only, assisting emergency managers with operational decision making, planning and resource allocation. It also highlights the importance of response and recovery coordination working collaboratively.

Activities have been broken down and are listed under either response or recovery for simplicity and ease of use. In practice not all response activities will be completed during the response phase. Likewise not all recovery activities will commence after the transition to recovery.

The post event period of any event is highly dynamic and produces many challenges, both foreseen and unpredicted. Response and recovery coordination must be flexible and able to adapt to the situation as it evolves.

In most cases the points noted in this table and in the ensuing document are outlined in greater detail in functional group or agency plans.



Activity	Response activities	Recovery activities
1. Situational awareness	<ul style="list-style-type: none"> <li>Road clearance teams</li> <li>General public</li> <li>Media reports</li> <li>Survey and rescue teams</li> <li>Impact assessment teams</li> </ul>	<ul style="list-style-type: none"> <li>Contributes to recovery planning through impact assessment data</li> <li>Comprehensive impact assessments</li> <li>Needs assessment</li> </ul>
2. Public Information	<ul style="list-style-type: none"> <li>Public Information Group activation</li> <li>Spokes persons identified</li> <li>SecureNT activated</li> </ul>	<ul style="list-style-type: none"> <li>Continues in recovery</li> </ul>
3. Survey and Rescue	<ul style="list-style-type: none"> <li>Survey teams deploy to designated areas</li> <li>Critical sites surveyed</li> <li>Deploy rescue teams – NTFRS and Territory Response Group provide primary Urban Search and Rescue capability</li> </ul>	<ul style="list-style-type: none"> <li>Survey and impact assessment data used to develop the Recovery Action Plan</li> </ul>
4. Road clearance	<ul style="list-style-type: none"> <li>Road patrol teams deploy and check assigned routes</li> <li>Road clearance to priority sites</li> <li>Assess Stuart Hwy to Katherine (supply route)</li> </ul>	<ul style="list-style-type: none"> <li>Restoration of road networks and bridges</li> <li>Return to business as usual</li> </ul>
5. Emergency accommodation	<ul style="list-style-type: none"> <li>Emergency accommodation and shelter                             <ul style="list-style-type: none"> <li>evacuation centres</li> </ul> </li> </ul>	<ul style="list-style-type: none"> <li>Evacuation centres may continue into recovery</li> </ul>

Activity	Response activities	Recovery activities
	<ul style="list-style-type: none"> <li>• Provision of resources that will enable people to remain in their homes</li> <li>• Emergency clothing</li> </ul>	<ul style="list-style-type: none"> <li>• Temporary accommodation options</li> <li>• Repatriation planning</li> </ul>
6. Medical	<ul style="list-style-type: none"> <li>• Hospital <ul style="list-style-type: none"> <li>- road clearance to the hospital</li> <li>- damage assessment</li> <li>- increase morgue capacity</li> <li>- divert patients from remote and regional areas</li> <li>- power (fuel) and water supplies</li> </ul> </li> <li>• Medical clinics and field hospitals <ul style="list-style-type: none"> <li>- determine the need for clinics to be opened</li> <li>- assess damage to clinics</li> <li>- deploy field hospital/s</li> </ul> </li> <li>• Medical presence in shelter <ul style="list-style-type: none"> <li>- supplied by the Medical Group</li> </ul> </li> <li>• Ambulance pick up points on key, cleared roads</li> <li>• GP clinics and pharmacies <ul style="list-style-type: none"> <li>- identify GP clinics able to open</li> <li>- identify pharmacies able to open</li> </ul> </li> <li>• Medically vulnerable people <ul style="list-style-type: none"> <li>- support agencies to follow-up and advise the Medical Group</li> <li>- vulnerable people in shelters</li> <li>- support for vulnerable people at shelters</li> </ul> </li> <li>• CareFlight / Royal Flying Doctor Service</li> </ul>	<ul style="list-style-type: none"> <li>• Hospital <ul style="list-style-type: none"> <li>- repair works</li> <li>- business continuity plans</li> </ul> </li> <li>• DoH <ul style="list-style-type: none"> <li>- health centres</li> <li>- repair works</li> <li>- reopen other clinics</li> </ul> </li> <li>• Support return of vulnerable people in community</li> <li>• GP clinics and pharmacies <ul style="list-style-type: none"> <li>- ongoing liaison by the Medical Group</li> </ul> </li> <li>• CareFlight / Royal Flying Doctor Service - resume business as usual</li> <li>• St John Ambulance – resume business as usual</li> </ul>
7. Essential goods and services	<ul style="list-style-type: none"> <li>• Establish emergency feeding and food distribution points</li> </ul>	<ul style="list-style-type: none"> <li>• Support the re-opening of the private business sector</li> </ul>



Activity	Response activities	Recovery activities
	<ul style="list-style-type: none"> <li>Assessing the damage to suppliers and retailers of critical resources</li> <li>Assess the impact on barge operations and any effect on the ability to supply remote communities</li> <li>Implement interim banking arrangements</li> </ul>	<ul style="list-style-type: none"> <li>Monitor levels and availability of essential goods</li> <li>Manage logistics arrangements supplying resources to outlying communities</li> <li>Public Health inspections (food outlets)</li> <li>Banking sector business continuity arrangements</li> </ul>
	<p><u>Fuel</u></p> <ul style="list-style-type: none"> <li>Fuel suppliers and point of sale</li> <li>Manage fuel supplies to emergency power generation</li> </ul>	<ul style="list-style-type: none"> <li>Monitor fuel levels</li> <li>Infrastructure repairs</li> <li>Emergency fuel supplies for recovery</li> <li>Liaise with fuel suppliers, distributors and wholesalers to re-establish long term supply</li> </ul>
	<p><u>Banking</u></p> <ul style="list-style-type: none"> <li>Assess damage to banks and ATMs</li> <li>Implement temporary arrangements</li> </ul>	<ul style="list-style-type: none"> <li>Emergency cash outlets</li> <li>Implement long term arrangements</li> </ul>
8. Evacuation	<ul style="list-style-type: none"> <li>Evacuations within community</li> <li>Evacuation out of community</li> <li>Registration</li> </ul>	<ul style="list-style-type: none"> <li>Support services for evacuees</li> <li>Recovery information for evacuees</li> <li>Repatriation</li> </ul>
9. Public Health	<ul style="list-style-type: none"> <li>Communicable disease control response</li> <li>Drinking water safety standards</li> <li>Sewage and waste disposal</li> <li>Safe food distribution and advice</li> <li>Vector and vermin control</li> <li>Food and commercial premises</li> </ul>	<ul style="list-style-type: none"> <li>Ongoing in recovery</li> </ul>
10. Utilities	<ul style="list-style-type: none"> <li>Power supply</li> <li>Power generation</li> <li>Water supply</li> <li>Sewerage</li> <li>Emergency sanitation</li> </ul>	<ul style="list-style-type: none"> <li>Restore power network</li> <li>Restore water and sewerage infrastructure</li> <li>Issue alerts until safe to use</li> </ul>
11. Impact assessments	<ul style="list-style-type: none"> <li>Training assessment teams</li> <li>Initial impact assessments</li> </ul>	<ul style="list-style-type: none"> <li>Comprehensive impact assessments</li> </ul>

Activity	Response activities	Recovery activities
		<ul style="list-style-type: none"> <li>Ongoing needs assessments</li> </ul>
<b>12. Transport infrastructure (supply lines)</b>	<u>Air (Airport/Airstrip)</u> <ul style="list-style-type: none"> <li>Clear the runway to allow air movements</li> <li>Establish a logistics hub at the airport</li> <li>Terminal damage and operational capability assessment</li> </ul>	<ul style="list-style-type: none"> <li>Monitor repairs and business continuity activities</li> </ul>
	<u>Road</u> <ul style="list-style-type: none"> <li>Highway and critical access roads damage assessment</li> <li>Repair work to commence immediately</li> </ul>	<ul style="list-style-type: none"> <li>Planning and prioritising repair work of all affected key Territory Highways (Stuart, Barkly, Victoria and Arnhem)</li> </ul>
	<u>Rail</u> <ul style="list-style-type: none"> <li>Rail damage assessment</li> <li>Outage estimation</li> </ul>	<ul style="list-style-type: none"> <li>Ongoing liaison with operator to support restoration to business as usual</li> </ul>
	<u>Port, harbour and barge</u> <ul style="list-style-type: none"> <li>Assess damage to port infrastructure and harbour facilities</li> <li>Assess the damage to barge facilities</li> </ul>	<ul style="list-style-type: none"> <li>Repairing infrastructure</li> <li>Establish alternate arrangements for the supply of remote communities</li> </ul>
<b>13. Waste management</b>	<ul style="list-style-type: none"> <li>Waste management requirements and develop waste management plan if required</li> </ul>	<ul style="list-style-type: none"> <li>Continues in recovery</li> </ul>
<b>14. Repairs and reconstruction</b>	<ul style="list-style-type: none"> <li>Private housing <ul style="list-style-type: none"> <li>impact assessments</li> <li>temporary repairs</li> </ul> </li> <li>Government buildings <ul style="list-style-type: none"> <li>damage assessment</li> </ul> </li> <li>Public housing <ul style="list-style-type: none"> <li>impact assessments</li> </ul> </li> <li>Private industry <ul style="list-style-type: none"> <li>damage assessments</li> </ul> </li> </ul>	<ul style="list-style-type: none"> <li>Private housing <ul style="list-style-type: none"> <li>information and support to facilitate repairs</li> </ul> </li> <li>Government buildings <ul style="list-style-type: none"> <li>repairs and reconstruction</li> </ul> </li> <li>Public housing <ul style="list-style-type: none"> <li>long term repair plans</li> </ul> </li> <li>Private industry <ul style="list-style-type: none"> <li>repair and reconstruction</li> </ul> </li> <li>Temporary accommodation for a visiting construction workforce</li> </ul>

Activity	Response activities	Recovery activities
15. Transport services	<ul style="list-style-type: none"> <li>Staged re-establishment of public transport services</li> </ul>	<ul style="list-style-type: none"> <li>Continues in recovery</li> </ul>
16. Tele-communications	<ul style="list-style-type: none"> <li>Telstra and Optus will assess the damage to their infrastructure</li> <li>Put in place temporary measures to enable landline and mobile services</li> </ul>	<ul style="list-style-type: none"> <li>Repair damage networks and infrastructure (for private entities there is support for operators only)</li> </ul>
17. Public safety	<ul style="list-style-type: none"> <li>Police will maintain normal policing services to the community</li> </ul>	<ul style="list-style-type: none"> <li>Gradual return to business as usual</li> </ul>
18. Animal welfare	<ul style="list-style-type: none"> <li>Temporary emergency arrangements for pets</li> </ul>	<ul style="list-style-type: none"> <li>Reunite pets with their owners and cease emergency support arrangements</li> </ul>
19. Community consultation	<ul style="list-style-type: none"> <li>Information provision regarding the overall situation, response efforts, what services are available and how to access them</li> </ul>	<ul style="list-style-type: none"> <li>Community consultation process regarding long term recovery and community development</li> </ul>

## 12. Acronyms

Acronyms	Definitions
AAPA	Aboriginal Areas Protection Authority
ABC	Australian Broadcasting Corporation
AEP	Aerodrome Emergency Plan
AHD	Australian Height Datum
AIIMS	Australasian Inter-Service Incident Management System
BFNT	Bushfires NT
DCDD	Department of Corporate and Digital Development
DCMC	Department of the Chief Minister and Cabinet
DEPWS	Department of Environment, Parks and Water Security
DIPL	Department of Infrastructure, Planning and Logistics
DITT	Department of Industry, Tourism and Trade
DoE	Department of Education
DoH	Department of Health
EMA	Emergency Management Australia
EOC	Emergency Operations Centre
ERA	Emergency Response Area
ESO	Essential Services Officer
FERG	Fire and Emergency Response Group
ICC	Incident Control Centre
ICP	Incident Control Point
JESCC	Joint Emergency Services Communications Centre
LCC	Local Coordination Centre
LEC	Local Emergency Committee
LRCC	Local Recovery Coordination Committee

Acronyms	Definitions
NERAG	National Disaster Risk Assessment Guidelines
NT	Northern Territory
NTES	Northern Territory Emergency Service
NTFRS	Northern Territory Fire and Rescue Service
NTG	Northern Territory Government
NTPF	Northern Territory Police Force
NTPFES	Northern Territory Police, Fire and Emergency Services
PAWC	Power and Water Corporation
RAT	Rapid Assessment Team
RCC	Rescue Coordination Centre
SEWS	Standard Emergency Warning Signal
SITREP	Situation Report
TDO	Territory Duty Officer
TEMC	Territory Emergency Management Council
TFHC	Department of Territory Families, Housing and Communities
VDRC	Victoria Daly Regional Council
VRD	Victoria River Downs
WebEOC	Web-Base Emergency Operation Centre