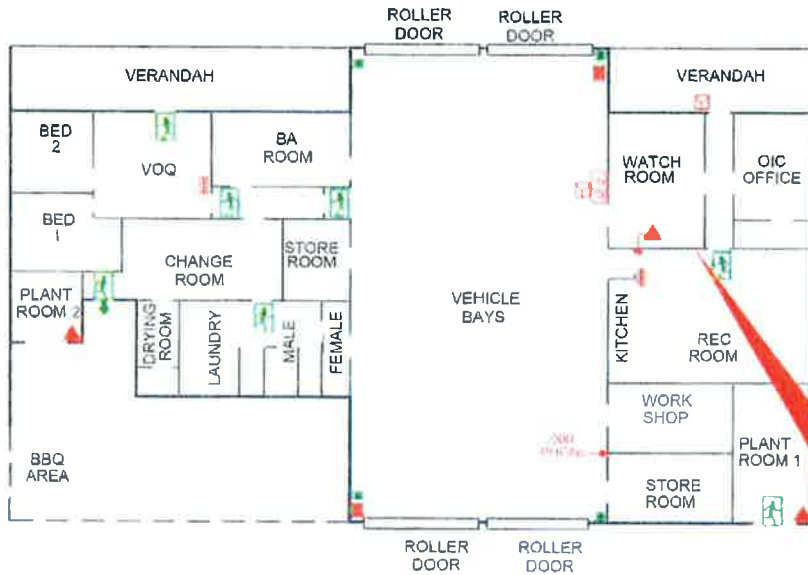









# EMERGENCY EVACUATION DIAGRAM

TENNANT CREEK FIRE STATION  
THOMPSON STREET, TENNANT CREEK



**YOU ARE  
HERE**

-  FIRE BLANKET
-  MANUAL CALL POINT
-  FIRE INDICATOR PANEL
-  DOOR RELEASE
-  FIRE HOSE REEL
-  DCP EXTINGUISHER
-  EXIT

GROUND FLOOR

## EMERGENCY PROCEDURES

- R**emove Remove yourself and others from danger
- A**larm Raise the alarm.
- \* Alert others in the vicinity to vacate.
  - \* Call Emergency Services 000
- C**ontain Fire and smoke by closing doors & windows behind you
- \* By selecting and using the correct Fire Extinguisher, only if safe to do so, and if you have been trained.
- E**vacuate Use Fire Exits.
- \* Take others with you and proceed to the designated Assembly Area.

## EVACUATION ASSEMBLY AREA

